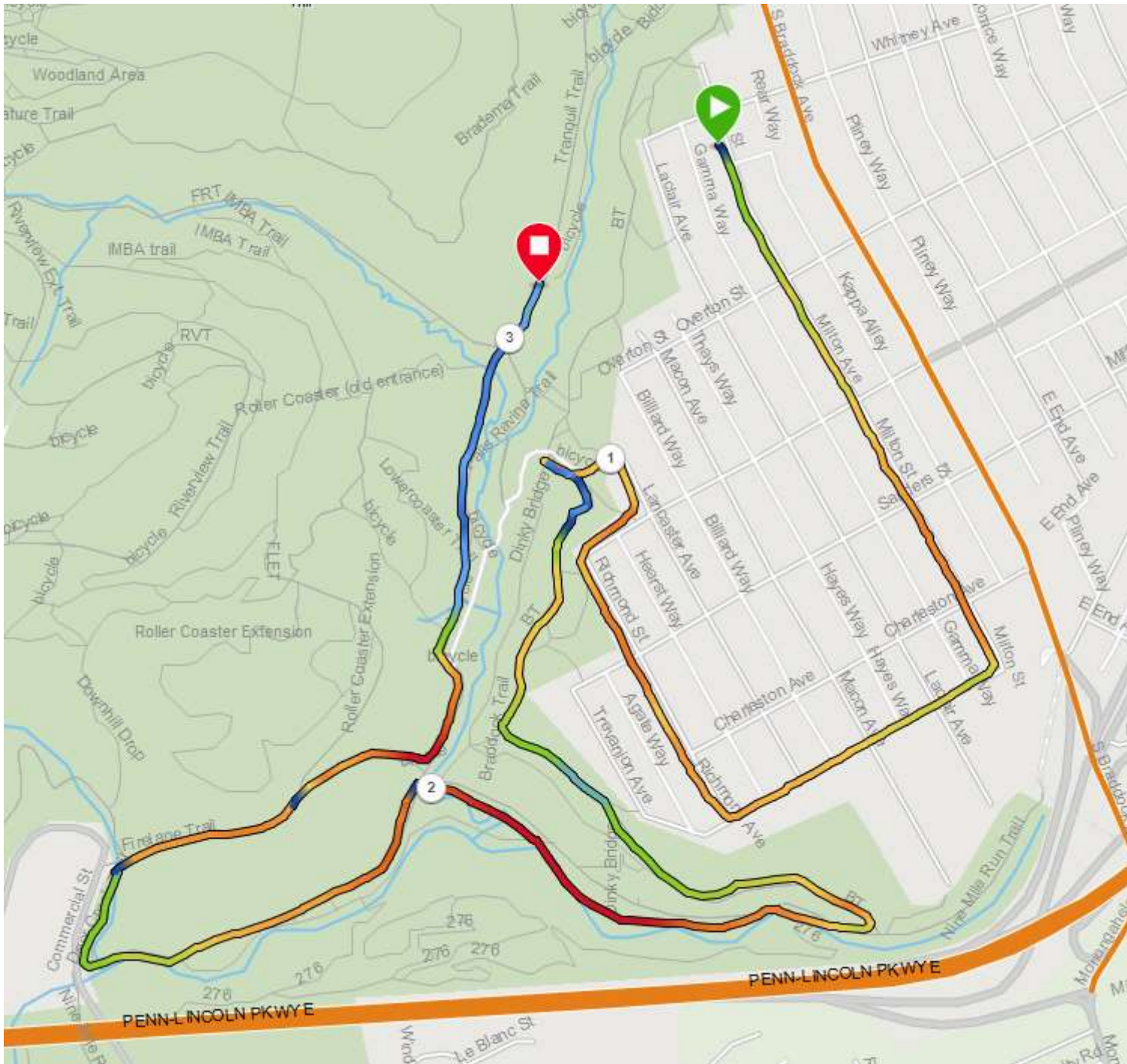
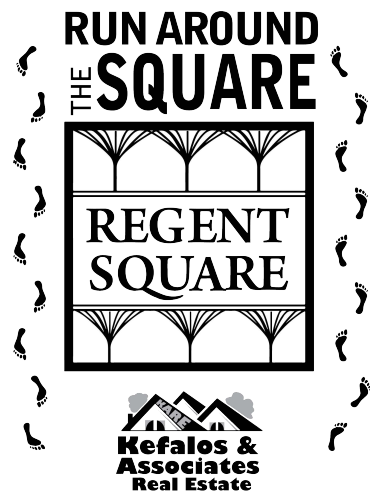
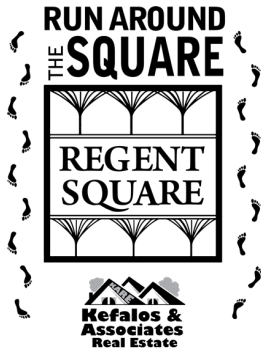


# 2022 Course Map





# 2022 Course

## Turn-by-Turn Instructions

### Road

- **START** at 908 Milton Avenue
- **STRAIGHT** on Milton Avenue towards Swissvale
- **RIGHT** on Trevanion Street
- **RIGHT** on Richmond Street
- **RIGHT** on Hutchinson Avenue
- **LEFT** on Lancaster Avenue and proceed straight into the park (TOTAL ROAD is 1.04 miles)

### Trail

- **LEFT** onto Braddock Trail and follow for 0.6 miles
- **RIGHT** onto Nine Mile Run Trail
- Stay **LEFT** at intersection (at the Triangular Planter) to remain on Nine Mile Run until Commercial Avenue
- Turn **RIGHT** just before the Commercial Ave parking lot onto Deer Creek Trail
- Turn **RIGHT** from Deer Creek Trail to Fire Lane Trail
- Follow Fire Lane Trail passed the Triangular Planter to the parking lot
- Follow the trail parallel to the parking lot to the start of Tranquil Trail
  - **IMPORTANT!! DO NOT RUN ACROSS THE SOCCER FIELD. STAY ON THE TRAIL!**
- Continue **STRAIGHT** through the Hollow until you pass the bench (TOTAL TRAIL 2.01 miles)